

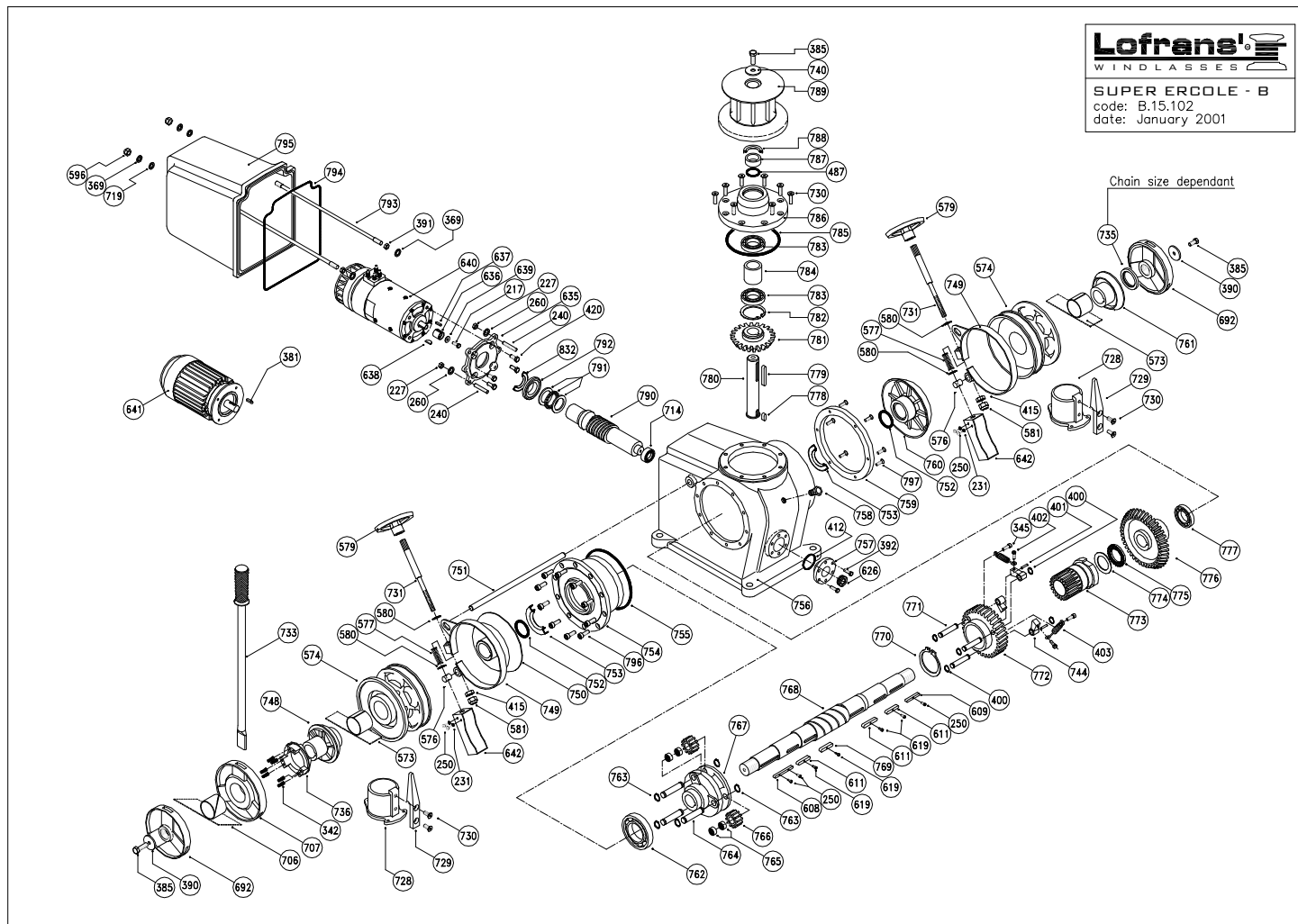
9 LISTA PARTI

9 PART LIST

9 LISTE DE PIÉCES

9 LISTA PARTI

9 LISTA PARTI



9 LISTA PARTI

9 PART LIST

9 LISTE DE PIECES

9 LISTA PARTI

9 LISTA PARTI

**SUPER ERCOLE - B**

Item	Description	Kit	Qty	Item	Description	Kit	Qty
226	Washer for screw M8	Kit B	4	763	Seal - 85x110x12	Kit A	2
227	Nut - M8	Kit B	4	764	Rack		1
231	Washer for screw M5	Kit B	4	765	Gasket		1
250	Hd cap screw - M5x8	Kit B	7	766	Body		1
260	Spring washer for screw M8	Kit B	4	767	Sightglass flange		1
342	Spring	Kit B	6	768	Oil plug 3/4"		1
351	Hd cap screw - M6x20	Kit B	3	769	Ring		1
369	Washer for screw M10	Kit B	4	780	Clutch cone - inner		1
381	Key - 8x7x40	Kit C	1	761	Clutch cone - outer		1
385	Hex hd screw - M10x30	Kit B	3	762	Bearing - 6017		1
391	Nut - M10	Kit B	2	763	Circclip - 20 Din 471	Kit D	6
392	Hex hd screw - M8x25	Kit B	6	764	Pivot		3
400	Circclip - 15 Din 471	Kit D	6	765	Bush		6
401	Pivot	Kit B	3	766	Gear		3
402	Hex hd screw - M6x16	Kit B	3	767	Gear flange		1
403	Spring	Kit B	3	768	Main shaft		1
412	O Ring seal - 153	Kit A	1	769	Key - 18x11x70	Kit C	1
415	Nut - M12	Kit B	2	770	Circclip - 95 Din 471	Kit D	1
487	O Ring seal - 41x43	Kit A	1	771	Pivot		3
573a	Nylon band		2	772	Wormwheel		1
573b	Nylon bush		2	773	Ratchet wheel		1
574a	Gipsy chain 10 Iso		2	774	Thrust ring - CP 7095		1
574b	Gipsy chain 12 Iso - 13 Din 766		2	775	Thrust bearing - AX 7095		1
574c	Gipsy chain 12 Iso - 13 Din 766		2	776	Bevel gear		1
574d	Gipsy chain 14 Iso		2	777	Bearing - 6212		1
574e	Gipsy chain 16 Iso		2	778	Key - 10x8x30	Kit C	1
574f	Gipsy chain 16 Din 766		2	779	Key - 10x8x30	Kit C	1
574g	Gipsy chain 12" TR		2	780	Shaft		1
574h	Gipsy chain 14 TR		2	781	Bevel gear		1
574i	Gipsy chain 13 Inalmet		2	782	Circclip - 75 Din 472	Kit D	1
574l	Gipsy chain 13 Din 764		2	783	Bearing - 6009		2
574m	Gipsy chain 16 TR		2	784	Spacer		1
574n	Gipsy chain 18 Iso		2	785	Gasket		1
574o	Gipsy chain 18 TR		2	786	Cover		1
574p	Gipsy chain 19 TR		2	787	Spacer		1
574q	Gipsy chain 20 Iso		2	788	Seal - 58x72x9	Kit A	1
574r	Gipsy chain 20 TR		2	789	Chromed bronze drum		1
574s	Gipsy chain 18 Din 766		2	790	Worm		1
576	Pivot		2	791	Thrust bearing - 51109		1
577	Spring		2	792	Spacer		1
579	Hand-wheel		2	793	Sturd - M10x403		2
580	Washer for screw M12	Kit B	4	794	Gasket		1
581	Safety nut - M12	Kit B	2	795	Motor cover		1
596	Cap nut - M10	Kit B	2	796	Hd cap screw - M8x20	Kit B	10
608	Key - 12x8x90	Kit C	1	797	Hd cap screw - M6x16	Kit B	6
609	Key - 12x8x60	Kit C	1	832	Seal - 45x72x10	Kit A	1
611	Key - 16x10x60	Kit C	3	1173	Circclip - T10 Din 472	Kit D	1
619	Hd cap screw - M6x10	Kit B	4				
626	Sightglass		1				
637	Key - 8x7x30	Kit C	1	KA13101	Kit A - Seals		1
640	Electric motor 3500W 24V		1	KB13101	Kit B - Screws&Nuts		1
641a	Electric motor A.C. ph.1 V 220 Kw 5 Hz 50/60		1	KC13101	Kit C - Keys		1
641b	Electric motor A.C. ph.3 V 380 Kw 4 Hz 50/60		1	KD13101	Kit D - Circclips		1
642	Brake cover		2				
682	Wingnut		2				
706	Nylon band		1				
707	Emergency wheel		1				
714	Bearing - 6205		1				
719	Nylon washer for screw M10	Kit B	2				
728	Chain pipe		2				
729	Stripper		2				
730	Conic hd screw - M10x30	Kit B	12				
731	Brake pivot		2				
733	Handle		1				
735	Spacer		1				
736	Dog clutch		1				
740	Washer	Kit B	3				
744	Pawl		4				
746	Slud - M8x55		4				
748	Clutch cone - outer		1				
749	Band brake		2				
750	Clutch cone - inner		1				
751	Brake pivot		1				
752	O Ring seal - 6212	Kit A	2				

B.15.102 - Rev. C Date: 11-2007