

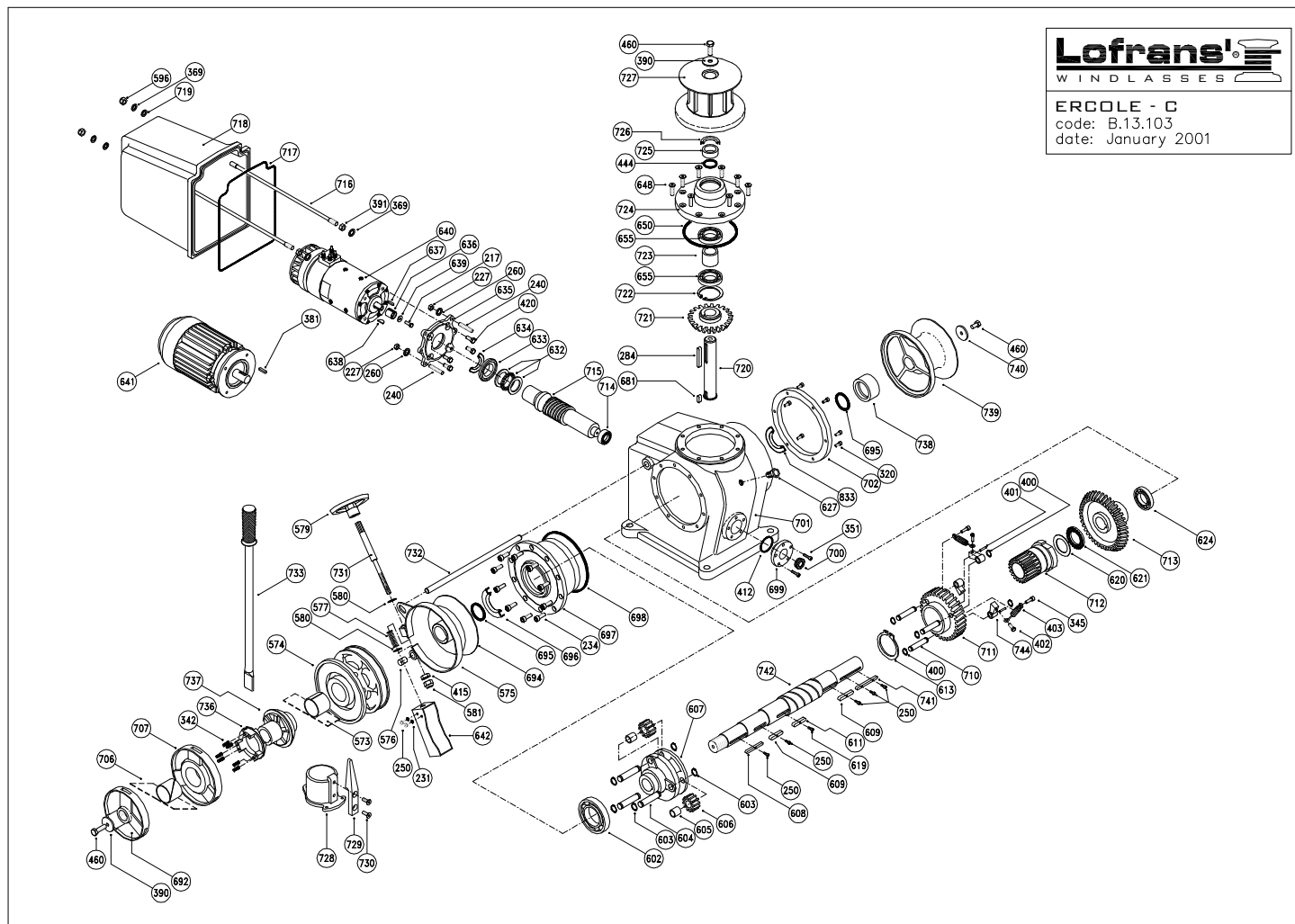
9 LISTA PARTI

9 PART LIST

9 LISTE DE PIECES

9 LISTA PARTI

9 LISTA PARTI



9 LISTA PARTI

9 PART LIST

9 LISTE DE PIECES

9 LISTA PARTI

9 LISTA PARTI

ERCOLE - C

Item	Description	Kit	Qty	Item	Description	Kit	Qty
226	Washer for screw M8	Kit B	4	694	Clutch cone - inner		1
227	Nut - M8	Kit B	4	695	O Ring seal - 6200	Kit A	1
234	Hd cap screw - M8x20	Kit B	10	696	Seal - 85x105x13	Kit A	1
250	Hd cap screw - M5x8	Kit B	5	697	Rack		1
260	Spring washer for screw M8	Kit B	4	698	Gasket		1
284	Key - 8x7x60	Kit C	1	699	Sightglass flange		1
320	Hd cap screw - M6x16	Kit B	6	700	Sightglass		1
342	Spring		6	701	Body		1
351	Hd cap screw - M6x20	Kit B	8	702	Ring		1
369	Washer for screw M10	Kit B	4	706	Nylon band		1
381	Key - 8x7x40	Kit C	1	707	Emergency wheel		1
385	Hex hd screw - M10x30	Kit B	1	710	Pivot		3
391	Nut - M10	Kit B	2	711	Wormwheel		1
400	Circlip - 15 Din 471	Kit D	6	712	Ratchet wheel		1
401	Pivot		3	713	Bevel gear		1
402	Hex hd screw - M6x16	Kit B	3	714	Bearing - 6205		1
403	Spring		3	715	Worm		1
412	O Ring seal - 153	Kit A	2	716	Stud - M10x403		2
415	Nut - M12	Kit B	1	717	Gasket		1
444	O Ring seal - 4112	Kit A	1	718	Motor cover		1
569	Chromed bronze drum		1	719	Nylon washer for screw M10	Kit B	2
573a	Nylon band		1	720	Shaft		1
573b	Nylon bush		1	721	Bevel gear		1
574a	Gipsy chain 10 Iso		1	722	Circlip - 72 Din 472	Kit D	1
574b	Gipsy chain 12 Iso - 13 Din 766		1	723	Spacer		1
574c	Gipsy chain 1/2" HT		1	724	Cover		1
574d	Gipsy chain 16 Din 766		1	725	Spacer		1
574e	Gipsy chain 14 Iso		1	726	Seal - 44x62x10	Kit A	1
574f	Gipsy chain 12 TR		1	728	Chain pipe		1
574g	Gipsy chain 1/2" TR		1	729	Stripper		1
574h	Gipsy chain 13 Inmet		1	730	Conic hd screw M10x30	Kit B	2
574i	Gipsy chain 13 Din 764		1	731	Brake pivot		1
574j	Gipsy chain 16 TR		1	732	Brake pivot		1
574k	Gipsy chain 18 Iso		1	733	Handle		1
574l	Gipsy chain 18 TR		1	736	Dog clutch		1
574m	Gipsy chain 19 TR		1	737	Clutch cone - outer		1
574n	Gipsy chain 20 Iso		1	738	Spacer		1
574r	Gipsy chain 20 TR		1	740	Washer	Kit B	1
574s	Gipsy chain 18 Din 766		1	741	Key - 12x8x150	Kit C	1
575	Band brake		1	742	Main shaft		1
576	Pivot		1	744	Pawl		3
577	Spring		1	746	Stud - M8x55		4
579	Hand-wheel		1	833	Seal - 72x105x13	Kit A	1
580	Washer for screw M12	Kit B	2	974	Chromed bronze drum		1
581	Safety nut - M12	Kit B	1	1004	Washer		2
586	Cap nut - M10	Kit B	2	1006	Washer		1
602	Bearing - 6014	Kit B	1	1034	Conic hd screw - M10x60	Kit B	1
603	Circlip - 18 Din 471	Kit D	6	1187	Hex hd screw - M10x40	Kit B	1
604	Pivot		3	KA13101	Kit A - Seals		1
605	Bush		3	KB13101	Kit B - Screws&Nuts		1
606	Gear		3	KC13101	Kit C - Keys		1
608	Gear flange	Kit C	1	KD13101	Kit D - Circlips		1
609	Key - 12x8x30	Kit C	1				
611	Key - 16x10x60	Kit C	1				
613	Circlip - 88 Din 471	Kit D	1				
619	Hd cap screw - M6x10	Kit B	1				
620	Thrust ring - GP 5578		1				
621	Thrust bearing - AX 5578		1				
624	Bearing - 6210		1				
627	Oil plug 1/2		1				
632a	Thrust bearing - 51108		1				
633	Spacer		1				
634	Seal - 40x72x10	Kit A	1				
637	Key - 6x7x30	Kit C	1				
640	Electric motor 3500W 24V		1				
641a	Electric motor A.C. ph 1 V 220 Kw 5 Hz 50/60		1				
641b	Electric motor A.C. ph 3 V 380 Kw 4 Hz 50/60		1				
648	Hd cap screw - M8x20	Kit B	8				
650	Gasket		1				
655	Bearing - 6207		2				
681	Key - 8x7x20	Kit C	1				
692	Wingnut		1				

B.13.103 - Rev. D Date: 11-2007