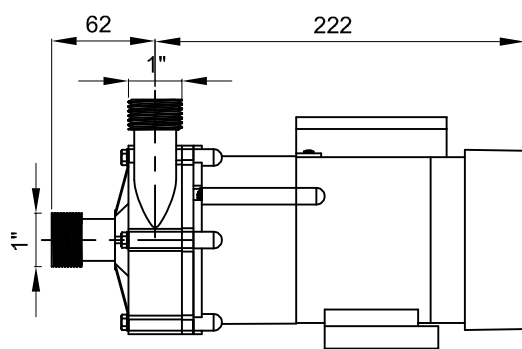
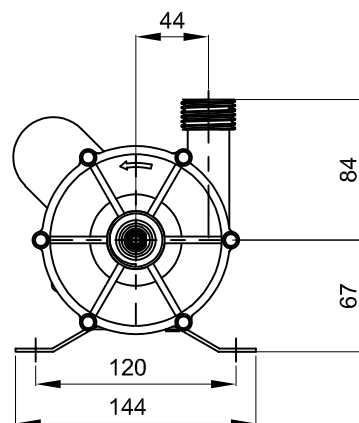


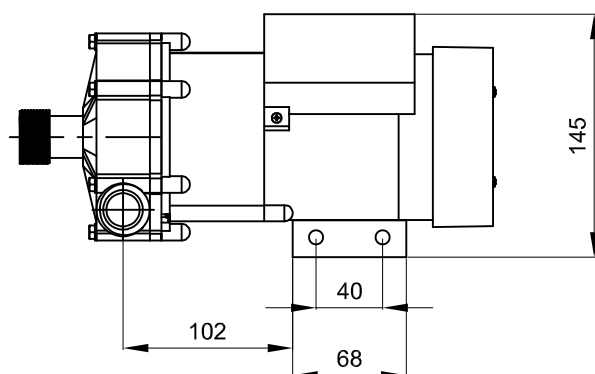
FRONT VIEW



SIDE VIEW

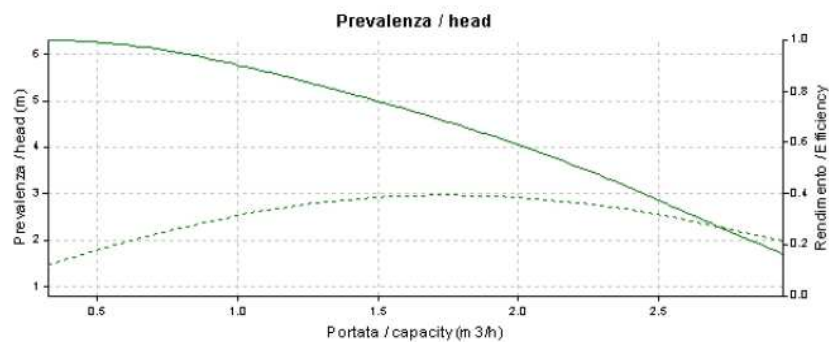


TOP VIEW

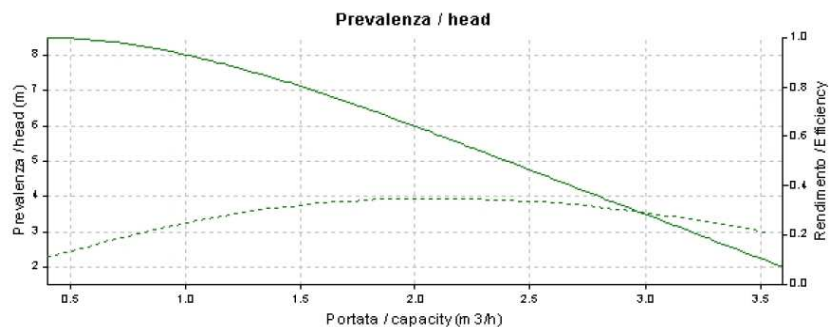


PUMP CURVE

@50 Hz



@60 Hz



TECHNICAL SPECIFICATION

| | 50 Hz | 60 Hz |
|---------------------------|-------------|-----------|
| NOMINAL RATING | 100 W | 135 W |
| POWER SUPPLY | 230/1/50-60 | |
| INLET CONNECTION | 1" F BSP | |
| OUTLET CONNECTION | 1" F BSP | |
| HOSE CONNECTORS | included* | |
| MAX HEAD | 6 m | 8 m |
| MAX FLOW | 50 lt/min | 60 lt/min |
| RPM | 2900 | 3500 |
| WEIGHT | 5 kg | |
| PUMP CASING | PLASTIC | |
| OPERATING TEMP | 0 - 60 °C | |
| AMBIENT TEMP | 0 - 45 °C | |
| STEEL SUPPORT AND DAMPERS | optional** | |

(*) 25mm hose connectors for both inlet and outlet connections, included as standard in the supply

(**) optional steel support and dampers ask for part number --> VPB_001

| | | | | |
|--------------|---|--------------|------------|------------------|
| Customer: | - | | Format: | A4 |
| Veco code | VPP0100JI*N | | Scale: | - |
| Description: | SEA WATER MAGNETIC DRIVEN PUMP 230/1/50-60 - 100W | | Page: | 1/1 |
| Drawn by: | S.Montagner | Approved by: | S.Gallazzi | Date: 05/06/2020 |



Drawings made by Veco for the solely use of the customer's technical department
All changes made by the customer must be approved by Veco's technical department